



### (C) ALUMNI'S FEEDBACK:

The Alumni of Pub Kamrup College spent valuable years of their life as a student in the College. The College created a common link for Alumni feedback form to collect feedbacks and suggestions for further all-round qualitative development and for enhancing the credibility of the college. A total of 138 Alumni of the College responded in this process. The Google form undertook the following aspects as well as questions.

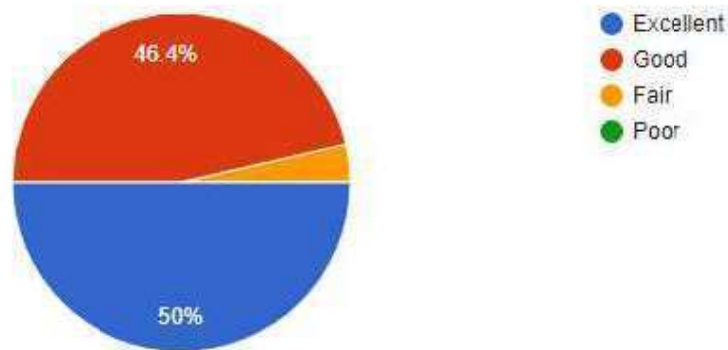
1. Admission procedure
2. Fee structure
3. Faculty / Teachers
4. Laboratories and equipment
5. Classroom
6. Quality of support material
7. Sports and cultural facilities
8. Canteen facilities
9. Your willingness to contribute to the development of the institution
10. Teacher student relationship
11. Overall rating of the College
12. Learning experience in the college in terms of their relevance to the real life application
13. How do you rate in handling of your grievances by the College authority/ department as a student?
14. How do you rate in handling of your grievances by the College authority/department as an alumni?
15. Seminar/ workshop organized by the department/ College
16. Research Project preparation/guidance
17. Counseling by teachers
18. Support and help of the college office
19. Do you feel proud to be an Alumnus/ Alumnai of Pub Kamrup College?
20. Are you willing to contribute to the development of the College/ Department?
21. Have you participated in any Alumni meet of this College?
22. Do you receive any communication from the College?
23. If you are invited to participate in any programme of the College will you be interested?
24. Is there a need to improve alumni involvement in development of the College?

  
Principal/ie  
Pub Kamrup College  
Barhata Chariali

Responses in graphical form:

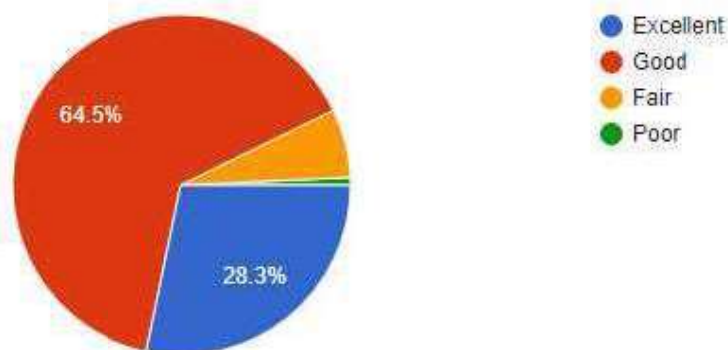
Admission procedure

138 responses



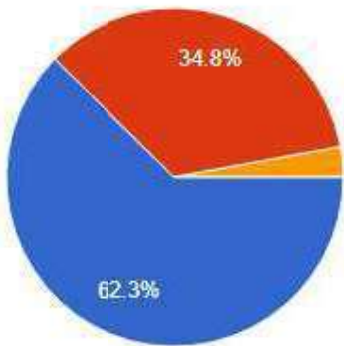
Fee Structure

138 responses



Faculty / Teachers

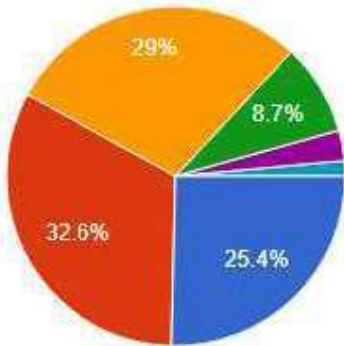
138 responses



- Excellent
- Good
- Fair
- Poor

Laboratories and equipment

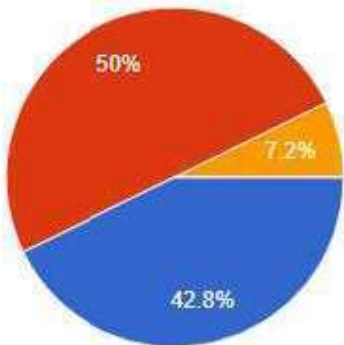
138 responses



- Excellent
- Very good
- Good
- Fair
- Poor
- Not applicable

Classroom

138 responses

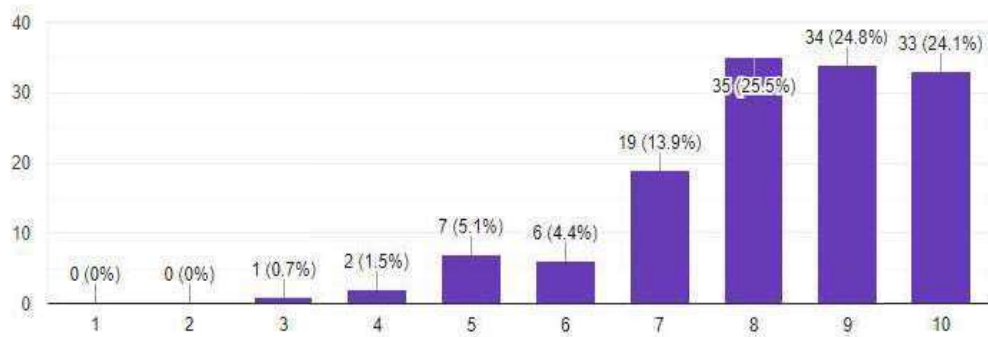


- Excellent
- Good
- Fair
- Poor

### Quality of support material ( 1 is lowest and 10 is highest)

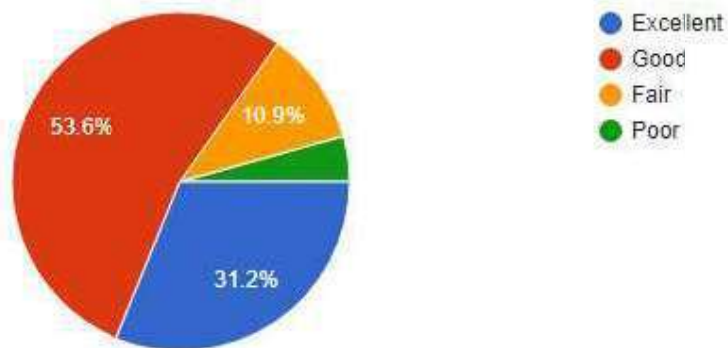
 Copy

137 responses



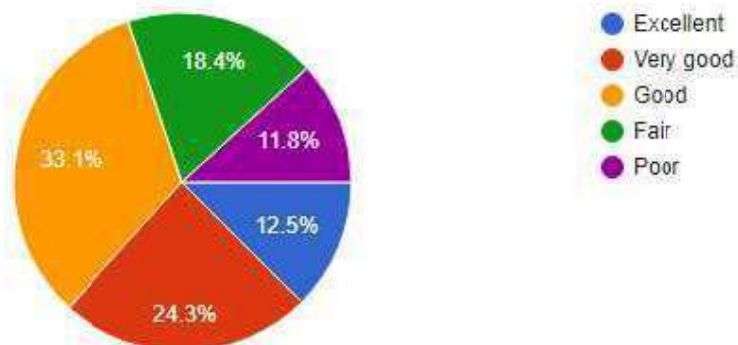
### Sports and cultural facilities

138 responses



### Canteen facilities

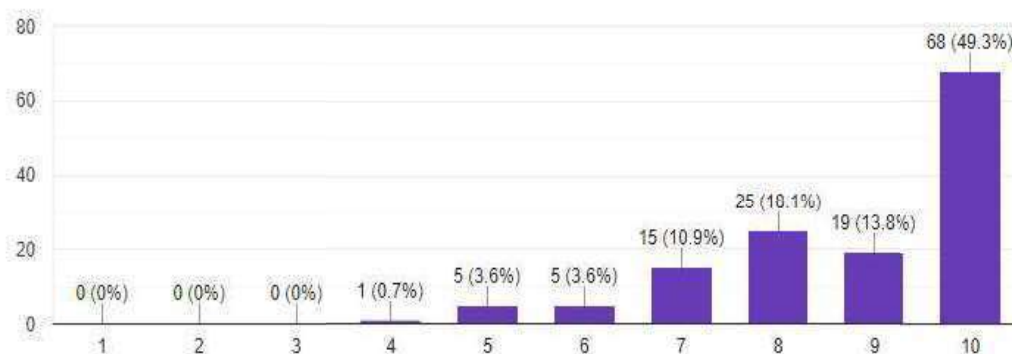
136 responses



Your willingness to contribute to the development of the institution ( 1 is lowest and 10 is highest)

 Copy

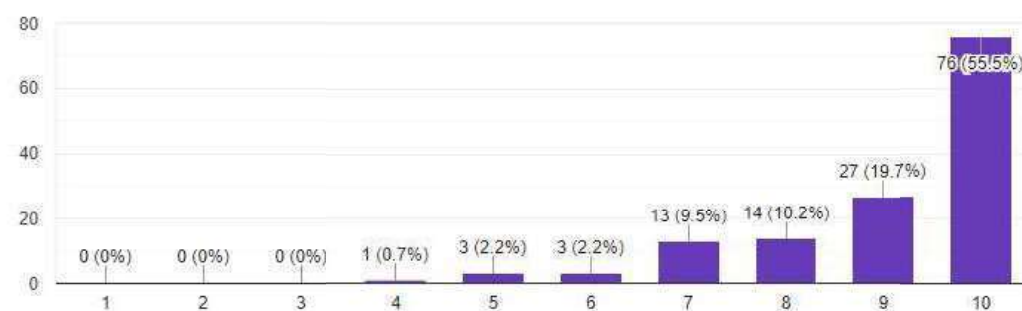
138 responses



Teacher student relationship ( 1 is lowest and 10 is highest)

 Copy

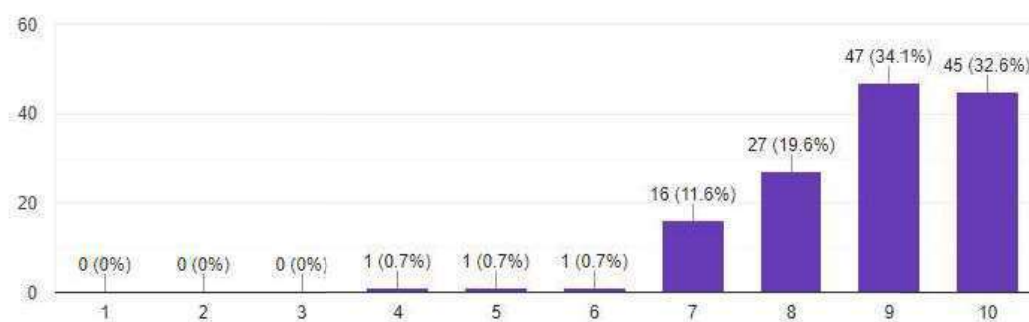
137 responses



Overall rating of the College ( 1 is lowest and 10 is highest)

 Copy

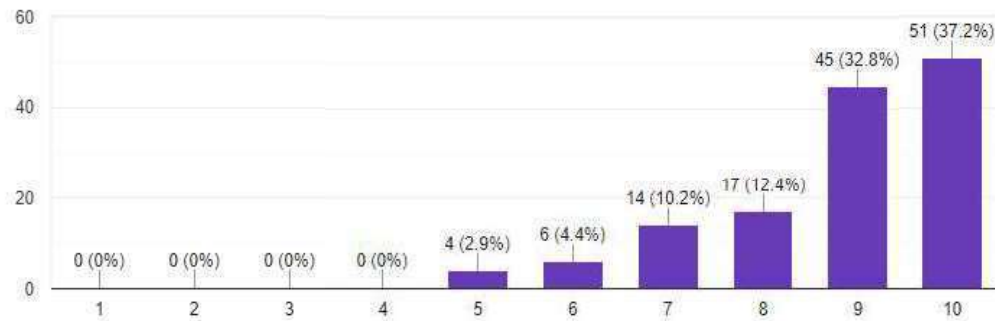
138 responses




Learning experience in the college in terms of their relevance to the real life application ( 1 is lowest and 10 is highest)

 Copy

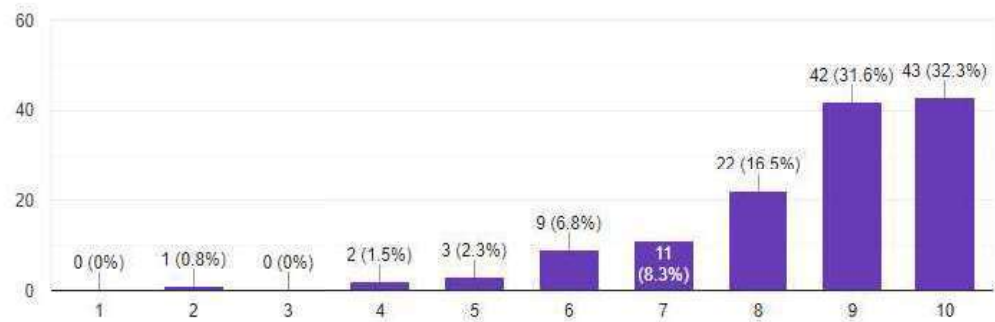
137 responses



How do you rate in handling of your grievances by the College authority/ department as a student? (1 is lowest and 10 is highest)

 Copy

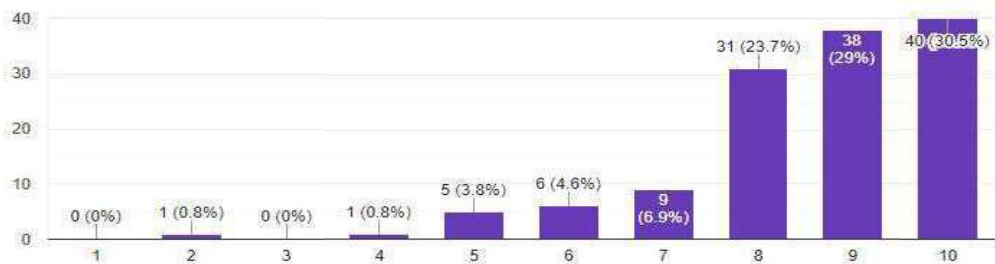
133 responses



How do you rate in handling of your grievances by the College authority/department as an alumni? ( 1 is lowest and 10 is highest)

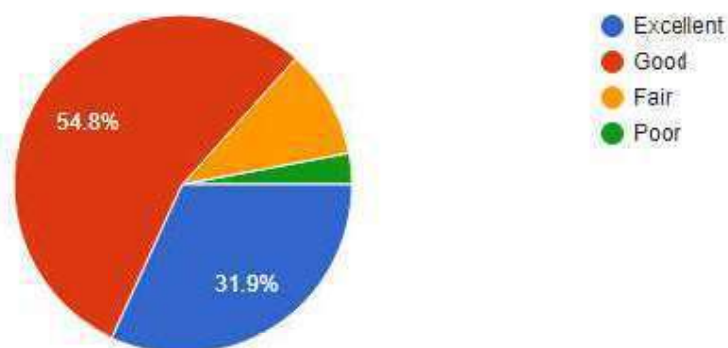
 Copy

131 responses



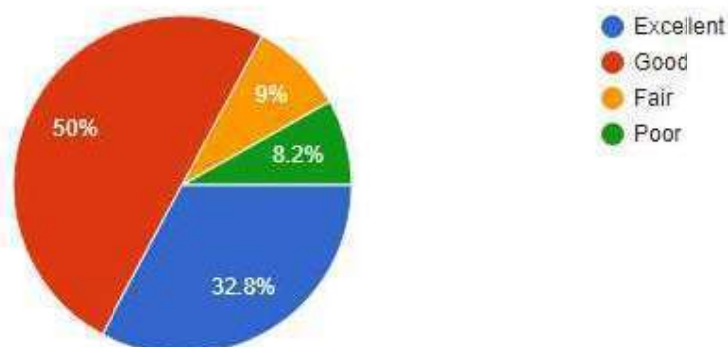
Seminar/ workshop organized by the department/ College ( 1 is lowest and 10 is highest)

135 responses



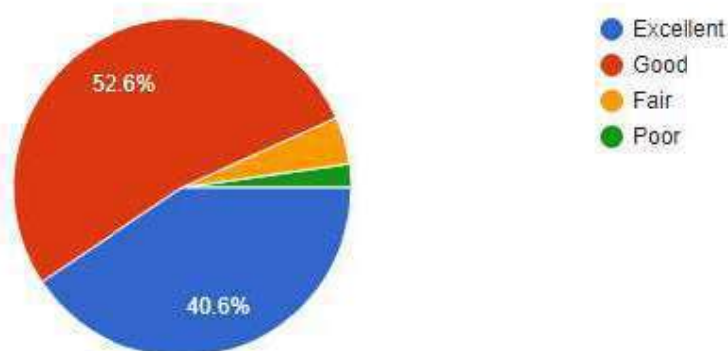
Research Project preparation/guidance

134 responses



Counseling by teachers

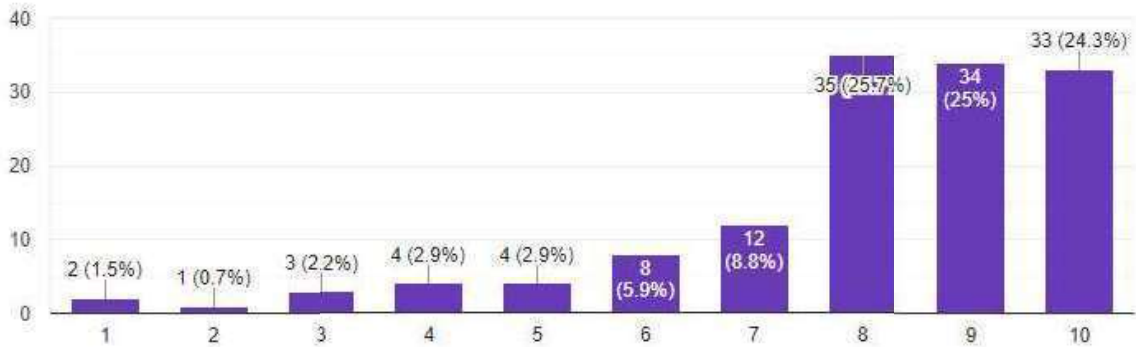
133 responses



Support and help of the college office ( 1 is lowest and 10 is highest)

 Copy

136 responses



Do you feel proud to be an Alumnus/ Alumna of Pub Kamrup College?

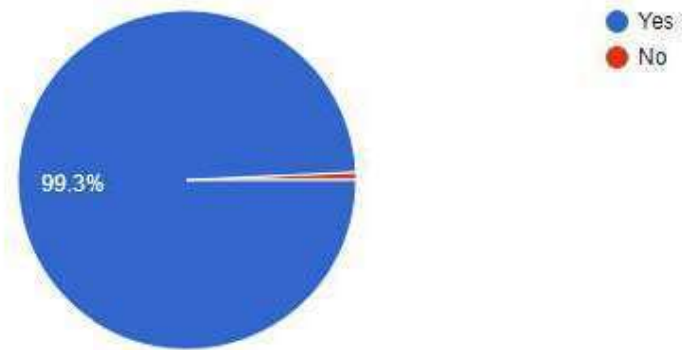
136 responses





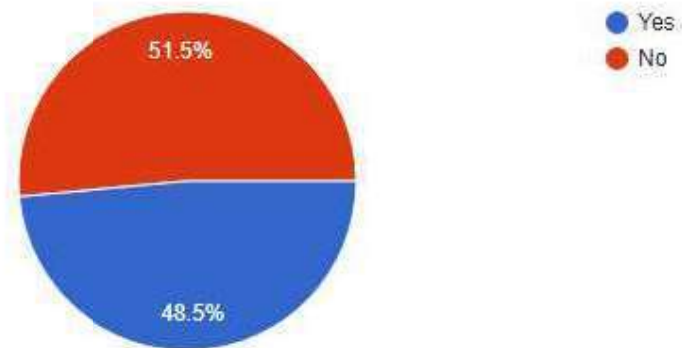
Are you willing to contribute to the development of the College/ Department?

134 responses



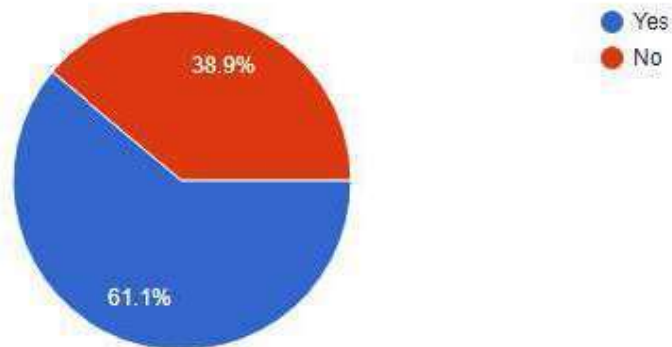
Have you participated in any Alumni meet of this College?

136 responses



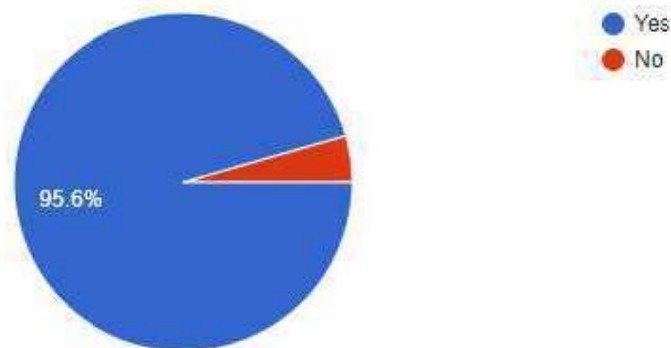
Do you receive any communication from the College?

131 responses



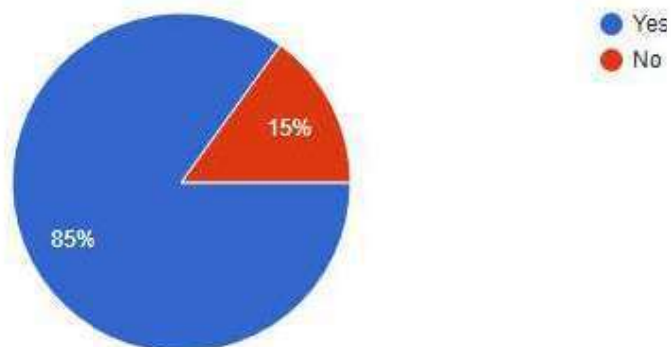
If you are invited to participate in any programme of the College will you be interested?

135 responses



Is there a need to improve alumni involvement in development of the College?

133 responses



### Result and Analysis:

In the issues like admission procedure and faculty/teachers scored 50 and above percentage in the excellent category. On the other hand fees structure, laboratories and equipments, classrooms, sports and cultural facilities, seminars/workshops and research projects scored greater than 30% but less than 50%. Finally, canteen facilities scored the lowest 13% in excellent category.

In the good and fair category, fees structure, laboratories and equipments, sports and cultural facilities, seminars/workshops and counseling by teachers scored above 50%.

In poor category canteen facilities and research project preparation scored around 7 to 12 percent.

**Table Containing the Responses against Certain Issues**

Issues	Excellent	Good	Fair	Poor	Yes/No
Admission Procedure	50	47	36		
Fee Structure	29	65	7	0.7	
Faculty / Teachers	63	35	3		
Laboratories and equipment	26	62	9	3	
Classroom	43	50	8		
Sports and cultural facilities	32	54	11	5	
Canteen facilities	13	58	19	12	
Seminar/ workshop organized by the department/ College	32	55	11	3	
Research Project preparation/guidance	33	50	9	8.2	
Counseling by teachers	41	53	5	2.3	
Do you feel proud to be an Alumnus/ Alumna of Pub Kamrup College?					Yes 100%
Are you willing to contribute to the development of the College/ Department?					Yes 99%
Have you participated in any Alumni meet of this College?					Yes 49%
Do you receive any communication from the College?					Yes 62%
If you are invited to participate in any programme of the College will you be interested?					Yes 96%
Is there a need to improve alumni involvement in development of the College?					Yes 85%

Regarding the feeling of being proud by Alumni, willingness to contribute and interest to participate in any programme scored above 95%. In the participation of Alumni meet, 49% responses are positive. Regarding receipt of any communication from the College, the Alumni gave 62% score.

**Table representing responses against 10 point scale**

Issues	Average rating (1 to 10 point scale)
Quality of support material	8.2
Your willingness to contribute to the development of the institution	8.8
Teacher student relationship	9
Overall rating of the College	8.8
Learning experience in the college in terms of their relevance to the real life application	8.7
How do you rate in handling of your grievances by the College authority/ department as a student?	8.5
How do you rate in handling of your grievances by the College authority/department as an alumni?	8.5
Support and help of the college office	8.6

In the above table indicates that the average rating the College is higher than 8 on the 10 point scale.

The alumni of the college gave good rank in the aspect of quality of faculty/teachers, admission procedure, Classroom facilities and counseling. Alumni consider a good teacher-students relationship in the College. Each alumnus feels proud of being a part of this institution.

The alumni feedback responses indicate poor performances in certain areas like sports and cultural facilities, canteen facilities and in research projects/guidance. They consider that the participation of Alumni in different meetings and occasions of the College is comparatively less.


The college has an opportunity in sports and cultural facilities as well as in the field of research projects and guidance.

### **Recommendations:**

1. College has to do more in regard to developing laboratory facilities and requires equipments to conduct the teaching learning process in a better way.
2. The College Canteen should be improved.

### **Signature of the Members:**

1. Mahananda M. Paimale
2. Julie Saikia
3. Hemanti Devi
4. Pankaj Kumar Baro

  
Principal /c  
Pub Kamrup College  
Baihata Chariali